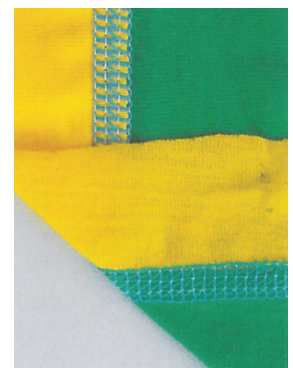
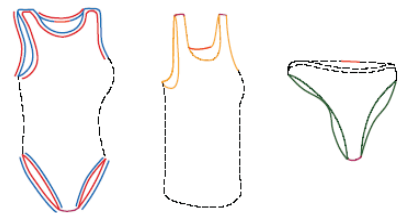
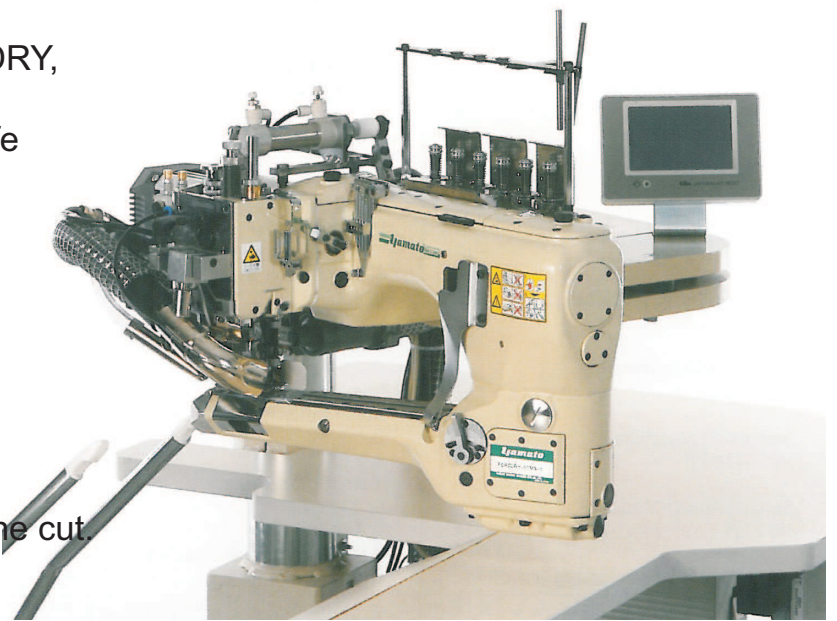


Workplace

Automatic Flatlock machine for Seamless articles

FTL-FD62-AG-1

- Sewing machine Yamato FD62DRY,
Special sewing garniture for
perfect overlapping with top knife
(stitch plate, foot – feed dogs),
- Electronic motor
EFKA DC 1500 Ab221.
direct drive
Control Pannel V810
- Rear CE.FTL1 chain scissors,
- Large Vacuum for fabric waste.
- Fiber Optic Sensor inserted in
machine foot to control exactly the cut.
- Front Reflecting Photocell for
start/stop.
- Height-adjustable support with wheels,
ergonomic Table.
- Pneumatic Fast/Smc devices.
- Software for controlling entire unit
- Stitching programmed.
- **Optional: Appliance for Lace application**
Step Motor *on Differential feed dog*



NOTE Tested on different sewing machine e.g.:
Yamato, Yuki-Union, Rimoldi, ecc...